

# 645 Santa Rosita

Solana Beach, CA 92075



Presented by Scott Peck & Tanya Parks  
Pacific Sotheby's International Realty









**S**olana Beach lifestyle at its finest. Enjoy the incredible ocean and lagoon views from this updated and immaculate single-level home.

Moments from beaches, golf, hiking, parks, shopping, dining and the award-winning schools of the crown jewel of North County, Solana Beach.

4 Bedrooms 2 Baths

1876 Square Feet

\$1,495,000







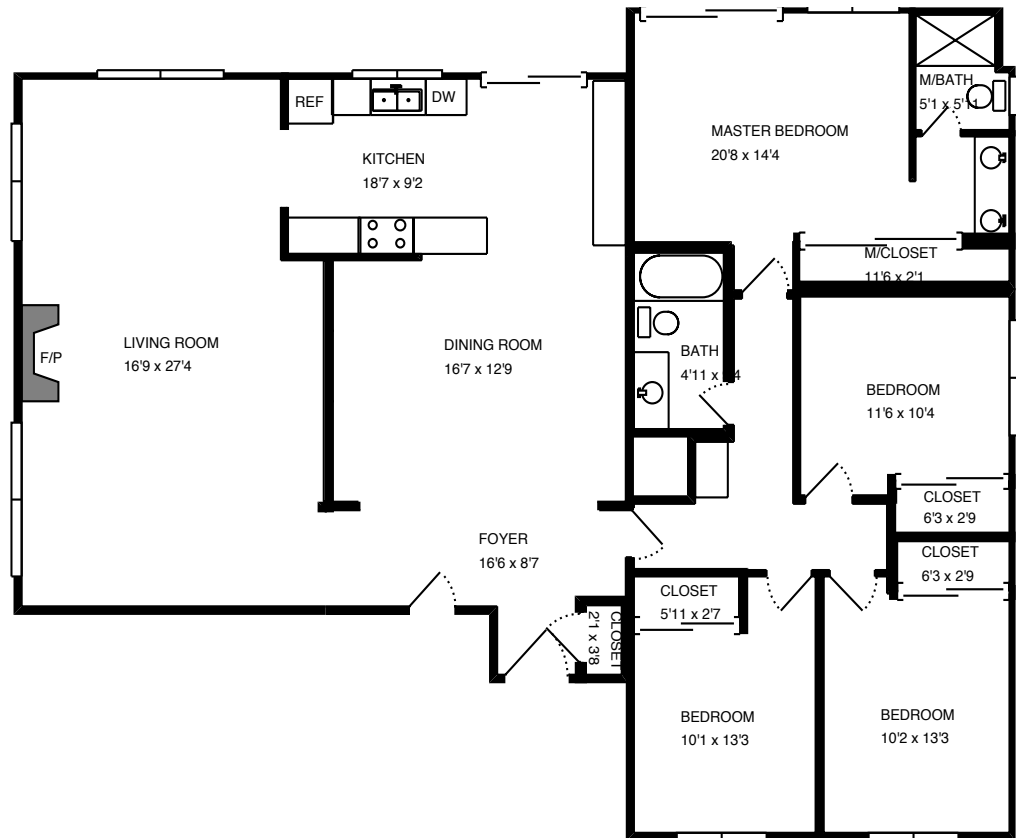


Enjoy an Intimate 3D virtual tour on your computer or mobile phone at [ScottPeck.com](http://ScottPeck.com)

## The Top 10 Reasons to Love this Home

1. Welcome home to this single-level gem with captivating 180° views of the ocean, San Elijo lagoon & mountains to the east. Enjoy beautiful sunrises & sunsets & watch the hot-air balloons drift by.
2. Prime location near the top of the hill, with privacy from nearby homes, in sought-after Santa Fe Hills community in Lomas Santa Fe.
3. Ideal open floor plan with abundant natural light & generous spaces for family living.
4. Spacious living room with rich flooring, vaulted ceiling, & fire place with custom stone finishes. Adjoining, large dining area with bay window looks out to nature preserve!
5. Cozy family room for casual gatherings. Brazilian Maple wood floors & artistic opening to living room.
6. Updated kitchen with quartz counter tops, GE gas range & built-in microwave, dual-basin farmhouse sink, Bosch dish washer & delightful views. Bright & cheery breakfast nook with built-in seating, Tiffany Blue background & ocean view!
7. Master bedroom with view to ocean & lagoon & sliding doors to patio with panoramic views. Updated master bath with attractive designer tile walk-in shower.
8. Updated guest bathroom with bathtub/shower. 3-car garage with overhead storage. Air conditioning throughout. Anderson/Milgard doors & windows. Built-in security system.
9. Fire pit & grassy yard. Covered patio to enjoy the views & dine or entertain in shade. Beautiful rose bushes bloom year-round!
10. Located in top-rated school district, 3 blocks from Solana Vista Elementary School with playgrounds, basketball courts, soccer & baseball fields; 2 blocks from trail head to the San Elijo Lagoon Ecological Reserve, one of San Diego's largest wetlands (915 acres) with 7 miles of trails leading to Cardiff State Beach; and less than 5 minutes away from enjoying the beach, San Dieguito County Park, LSF Executive Golf Course, LSF Country Club, shops, restaurants, Cedros Design District & Solana Beach Train Station.



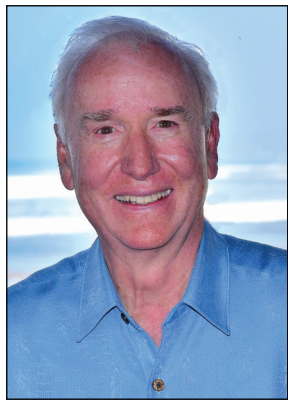


A perfect floor plan for family living  
and entertaining









**Scott Peck**  
Broker Associate

858-967-2604  
[ScottyPeck@gmail.com](mailto:ScottyPeck@gmail.com)  
[ScottPeck.com](http://ScottPeck.com)  
 DRE 00999920

Moving Lives Forward!



Co-listed with Lindsay Herrell  
 DRE 01878670

**Tanya Parks**  
Broker Associate



619-550-8887  
[TanyaParksre@gmail.com](mailto:TanyaParksre@gmail.com)  
[TanyaParks.com](http://TanyaParks.com)  
 DRE 01961090